

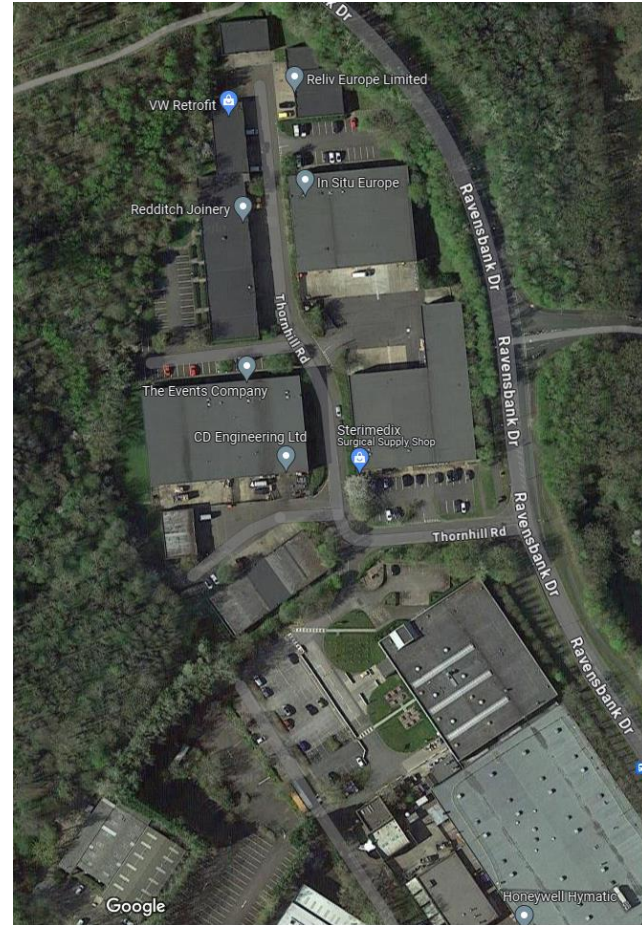
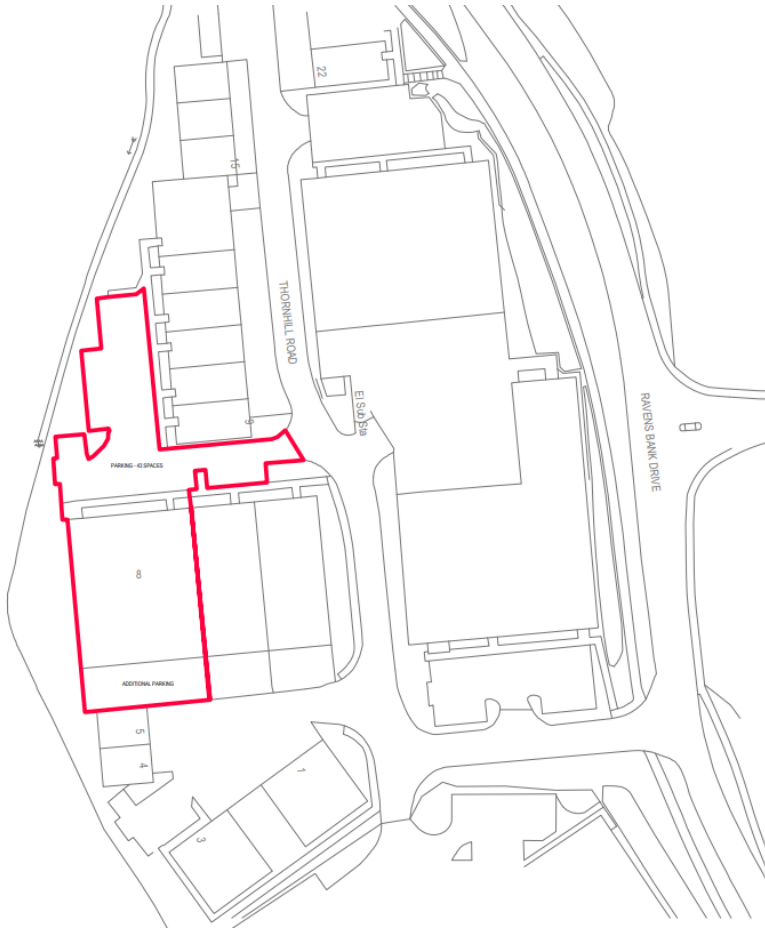
23/01265/FUL

8 Thornhill Road, North Moons Moat,
Redditch B98 9ND

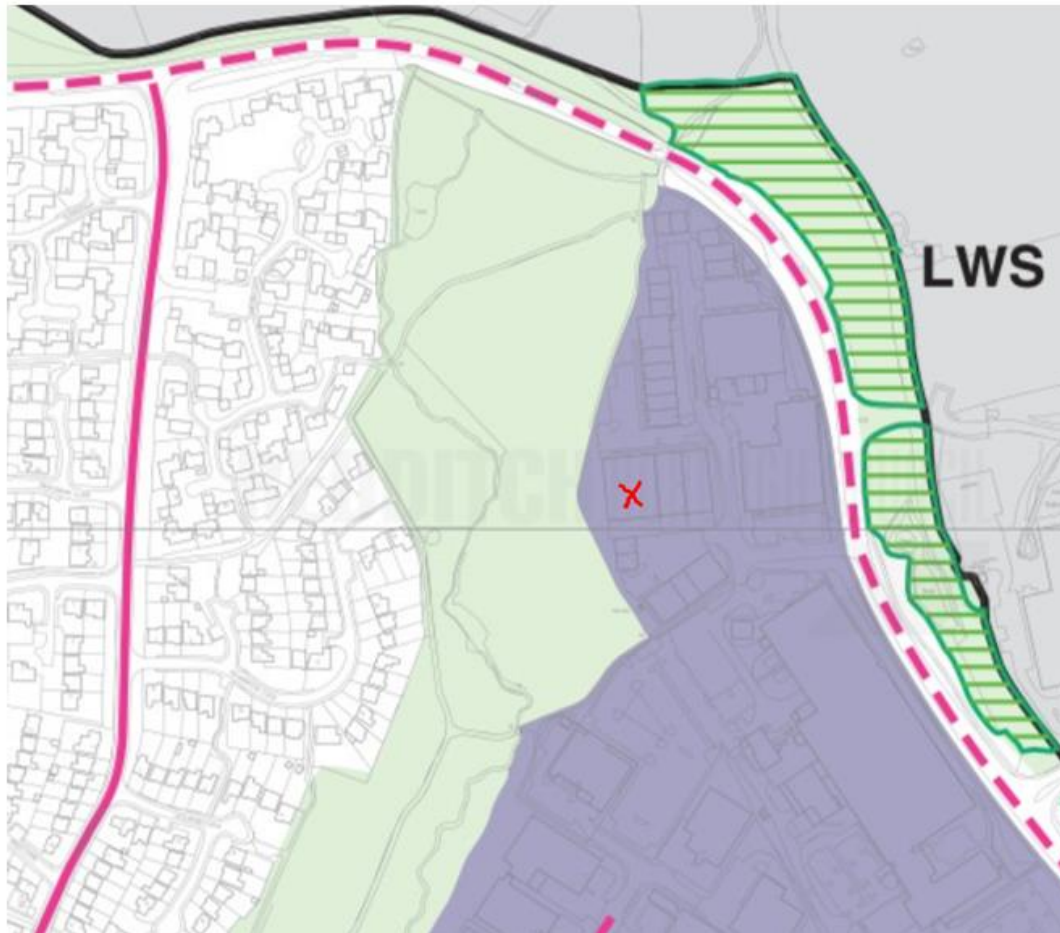
Change of use of an Industrial unit to a Gymnasium,
Martial Arts Studio and Café

Recommendation: Refusal

Site location

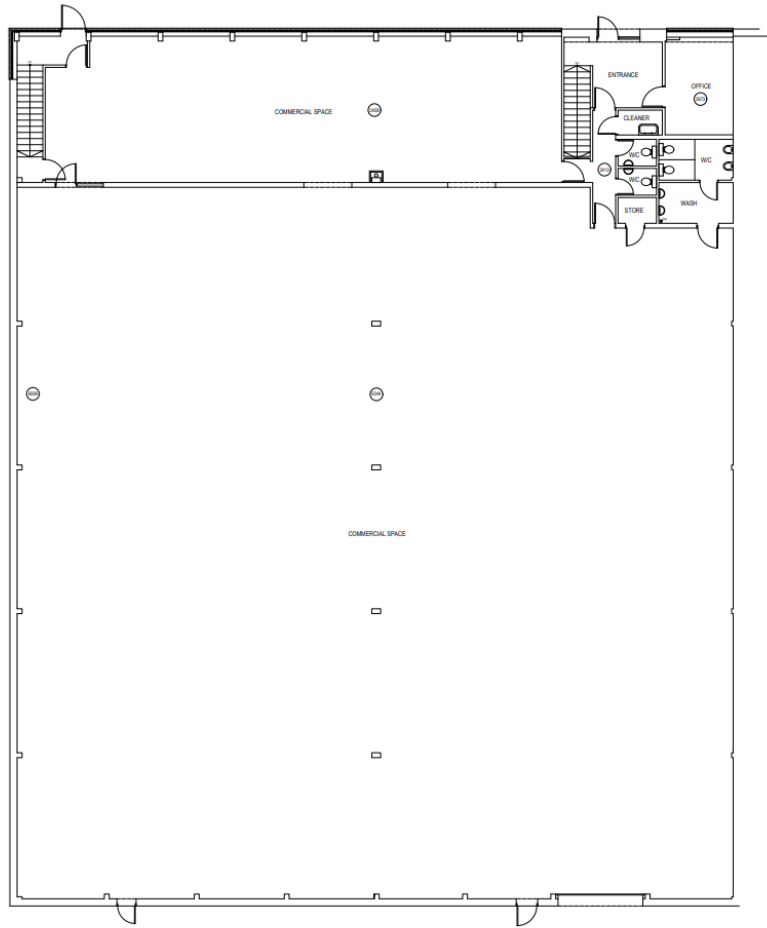


Local Plan designation

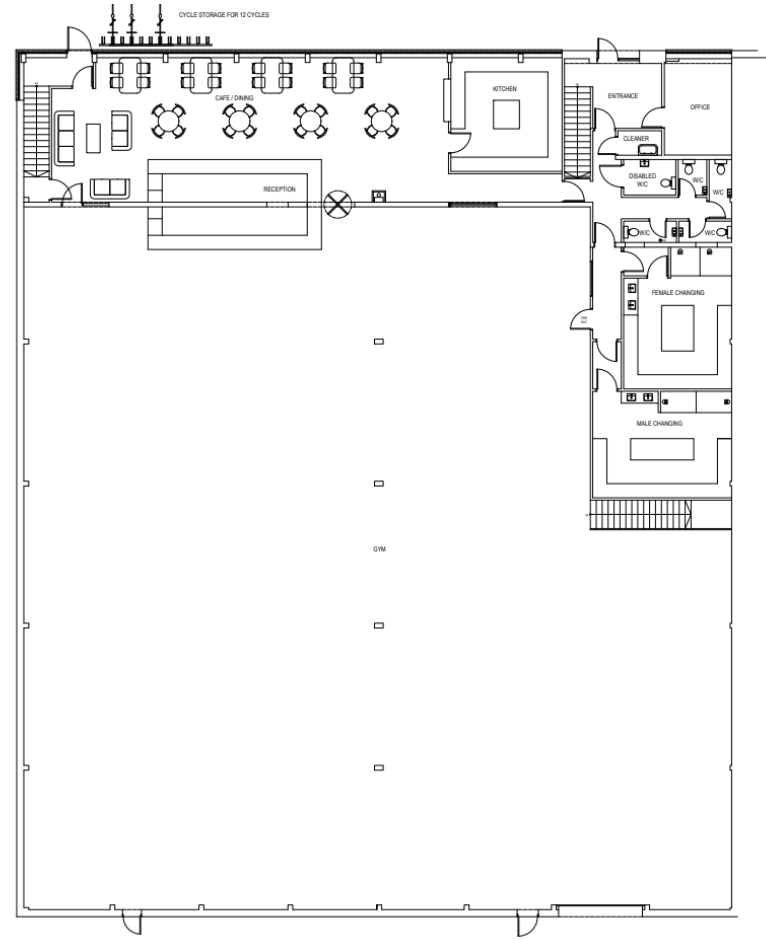


Primarily Employment Areas
(Policy 24 Development within Primarily
Employment Areas)

Ground floor plan Existing (L) and Proposed (R)

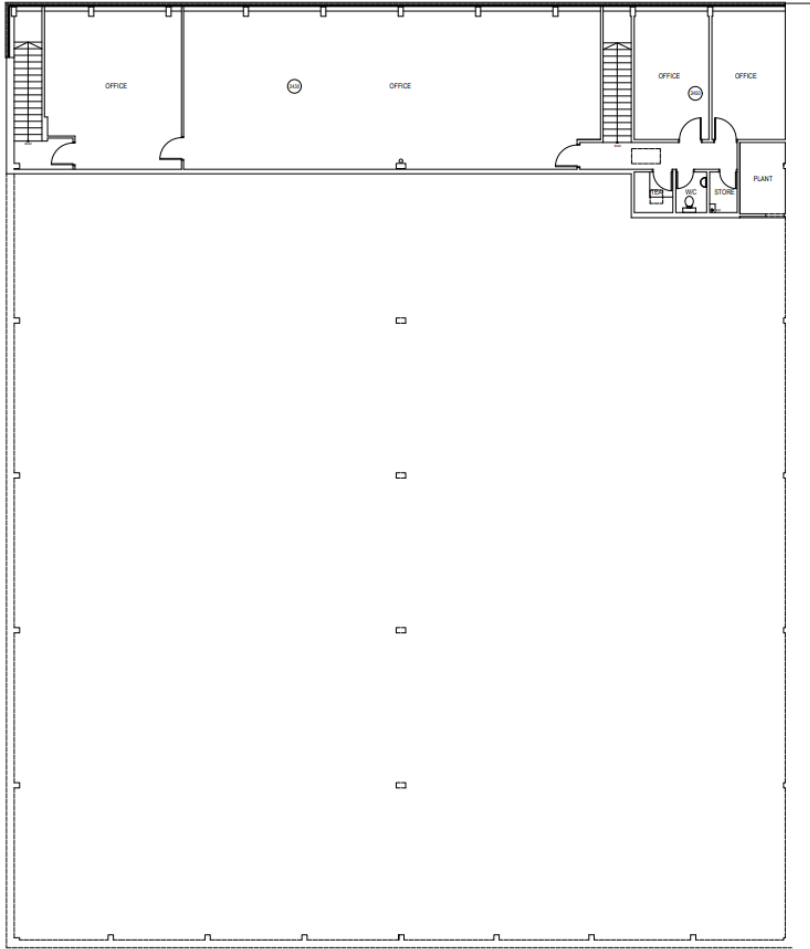


GROUND FLOOR PLAN

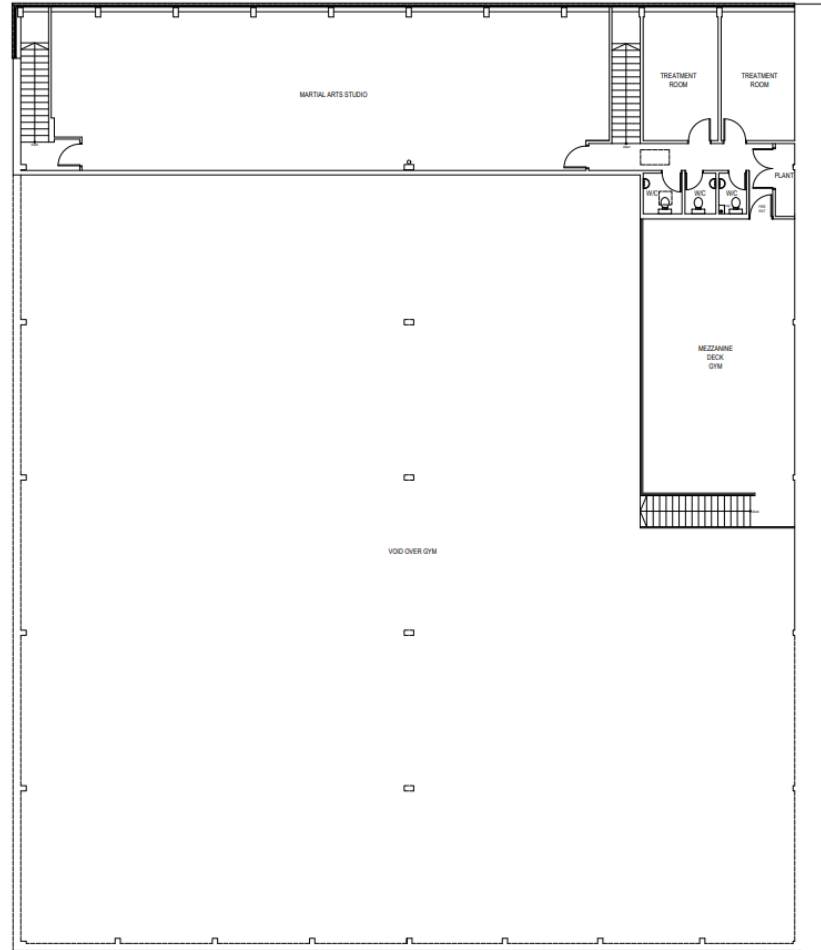


GROUND FLOOR PLAN

First floor plan Existing (L) and Proposed (R)

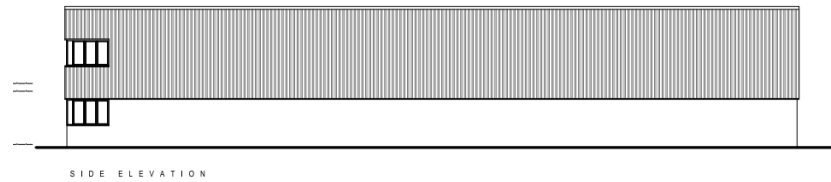
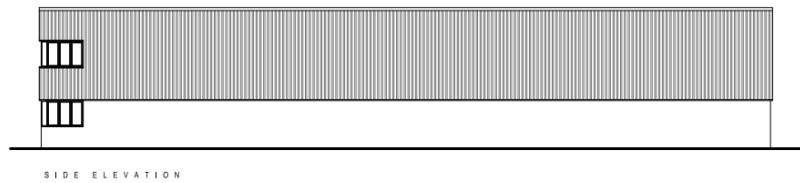
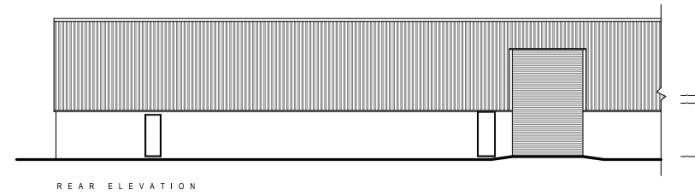
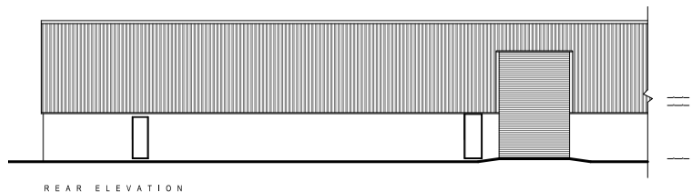
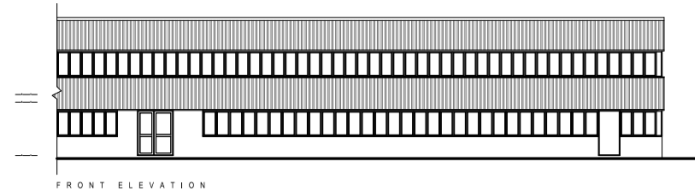
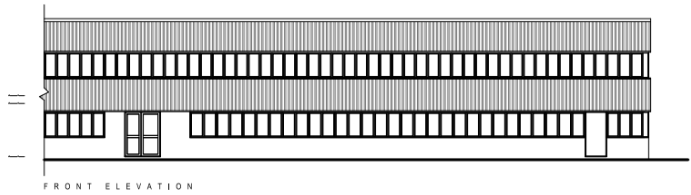


FIRST FLOOR PLAN



FIRST FLOOR PLAN

Elevations Existing (L) and Proposed (R) (no changes)



External images of building



Front elevation



Rear external area



Rear external area



Side elevation

Internal images of building



Main internal commercial space



Additional ground floor commercial space



First floor office space